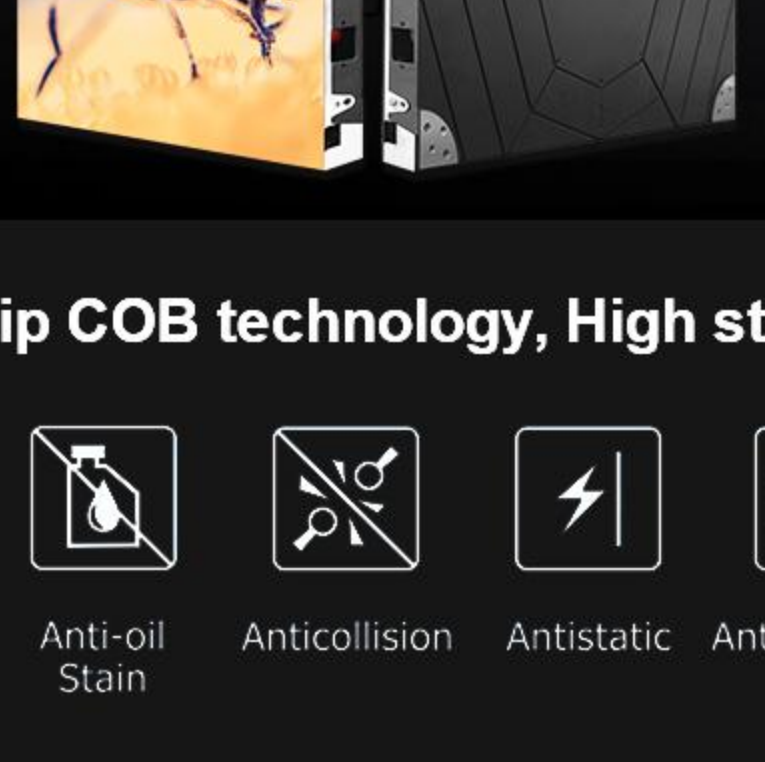


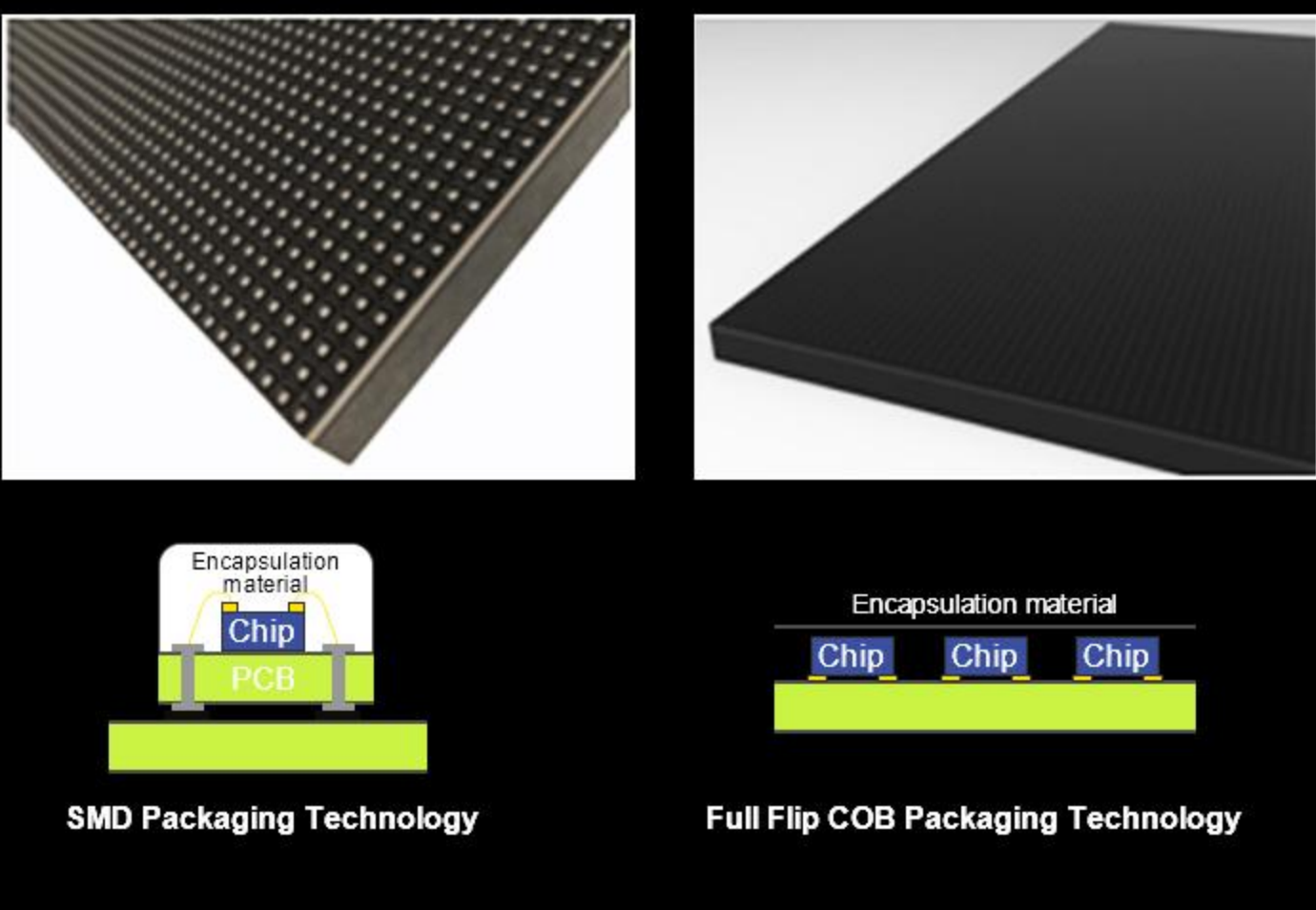
ST PRO Series

The high-end 16:9 led video wall



Flip chip COB technology, High stability

- Dust Proof
- Anti-oil Stain
- Anticollision
- Antistatic
- Antioxidation



SMD & COB Technology (optional)

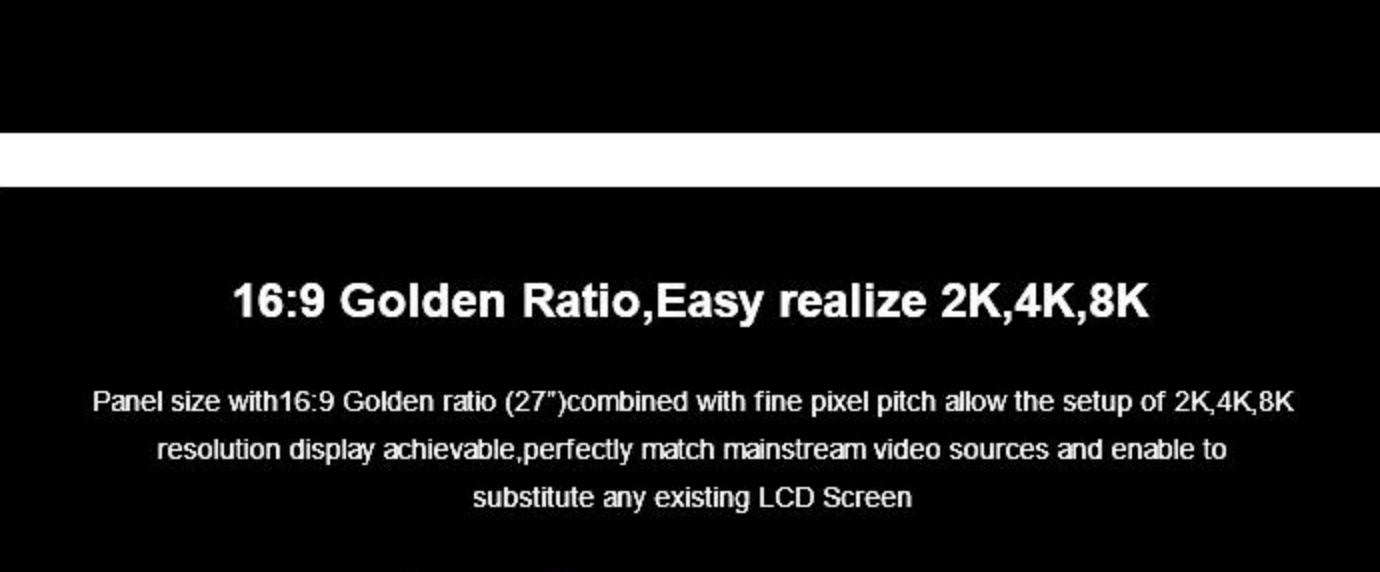
Surface mount device
SMD

Chip On Board
COB



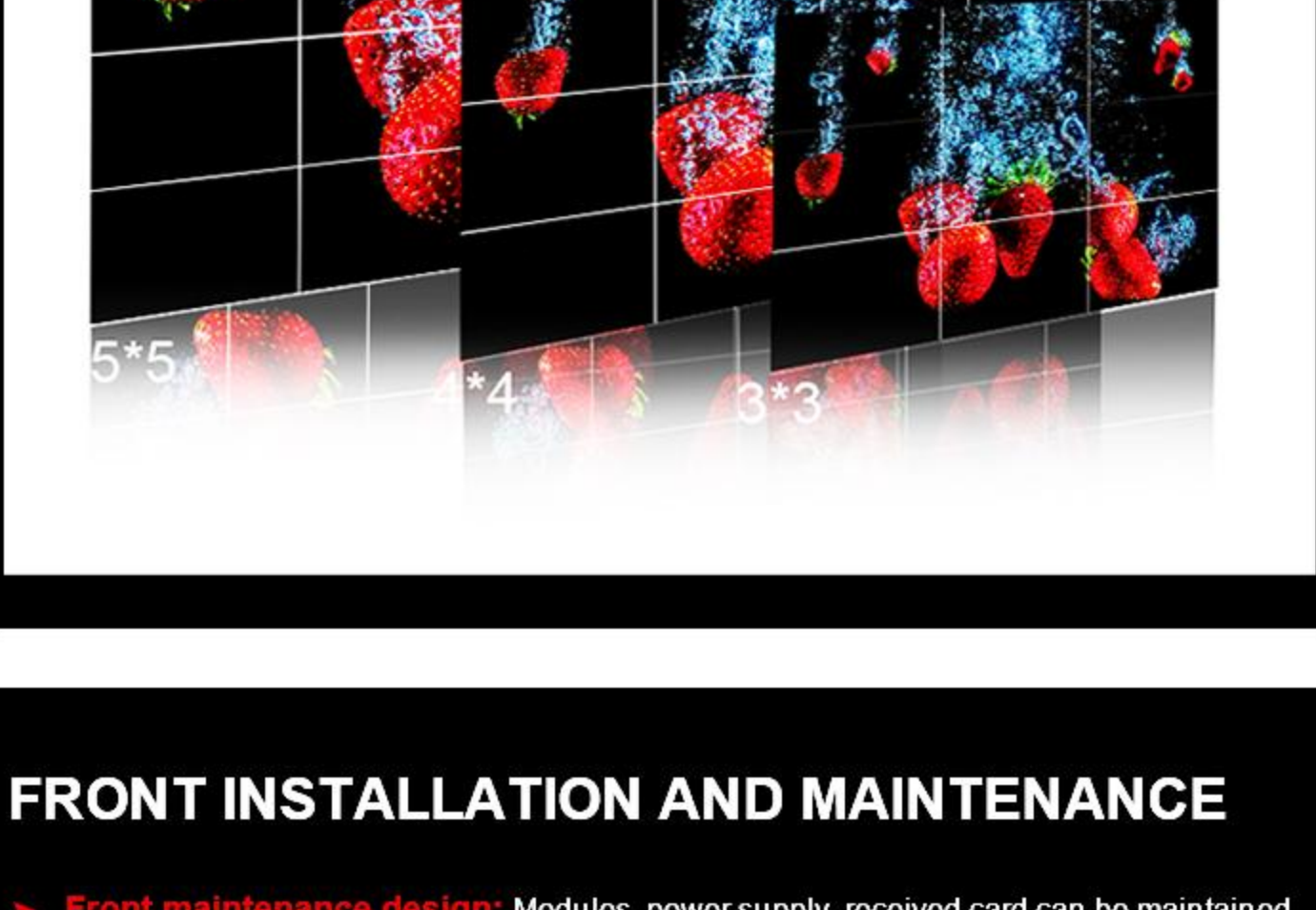
Restore Natural Color

- Radio gamut range of **115% NTSC**, **281 trillion** colors, more detailed and rich colors, softer image display, enhance visual experience
- Secondary optical diffusion with **matte coating effectively** reduces light intensity radiation and pressure on the viewer's retina



Restore Natural Color

The areal packaging technology makes the LED module glow evenly, and the horizontal and vertical viewing angles are **170°/170°** without color bias, effectively eliminating moire



16:9 Golden Ratio, Easy realize 2K, 4K, 8K

Panel size with 16:9 Golden ratio (27") combined with fine pixel pitch allow the setup of 2K, 4K, 8K resolution display achievable, perfectly match mainstream video sources and enable to substitute any existing LCD Screen

- 16:9**
- 2K**
- 4K**
- 8K**

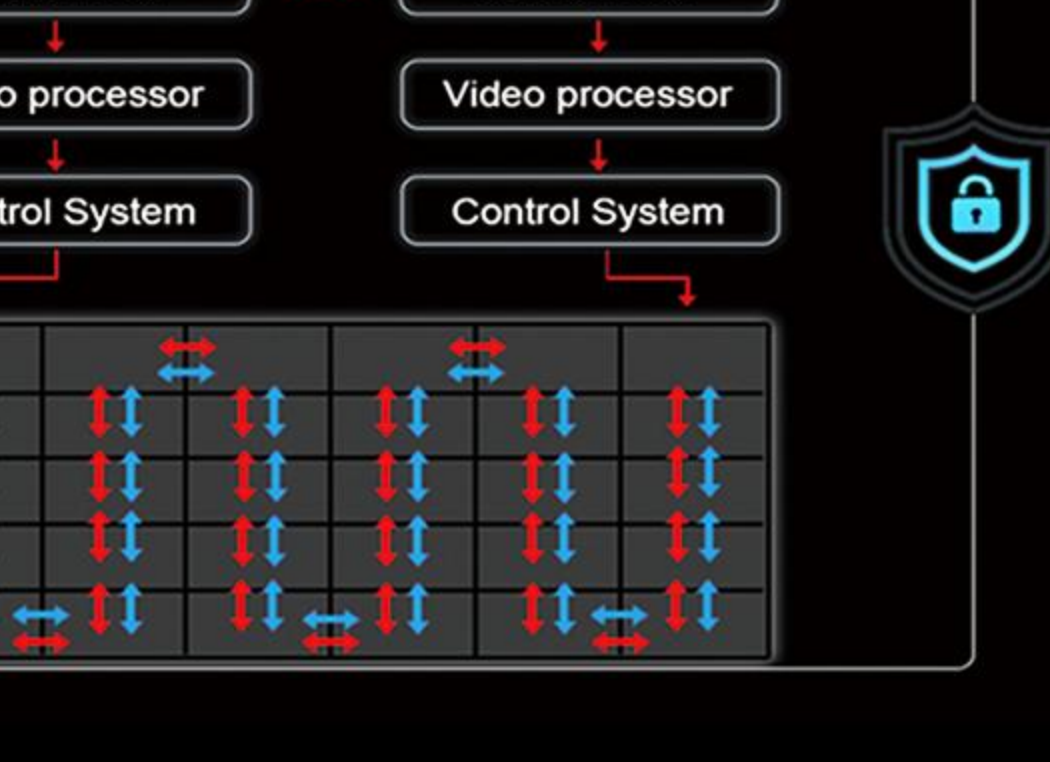


FRONT INSTALLATION AND MAINTENANCE

- ▶ **Front maintenance design:** Modules, power supply, received card can be maintained from the front without rear space.
- ▶ **Front install design:** support direct wall mounted with simple steel bars

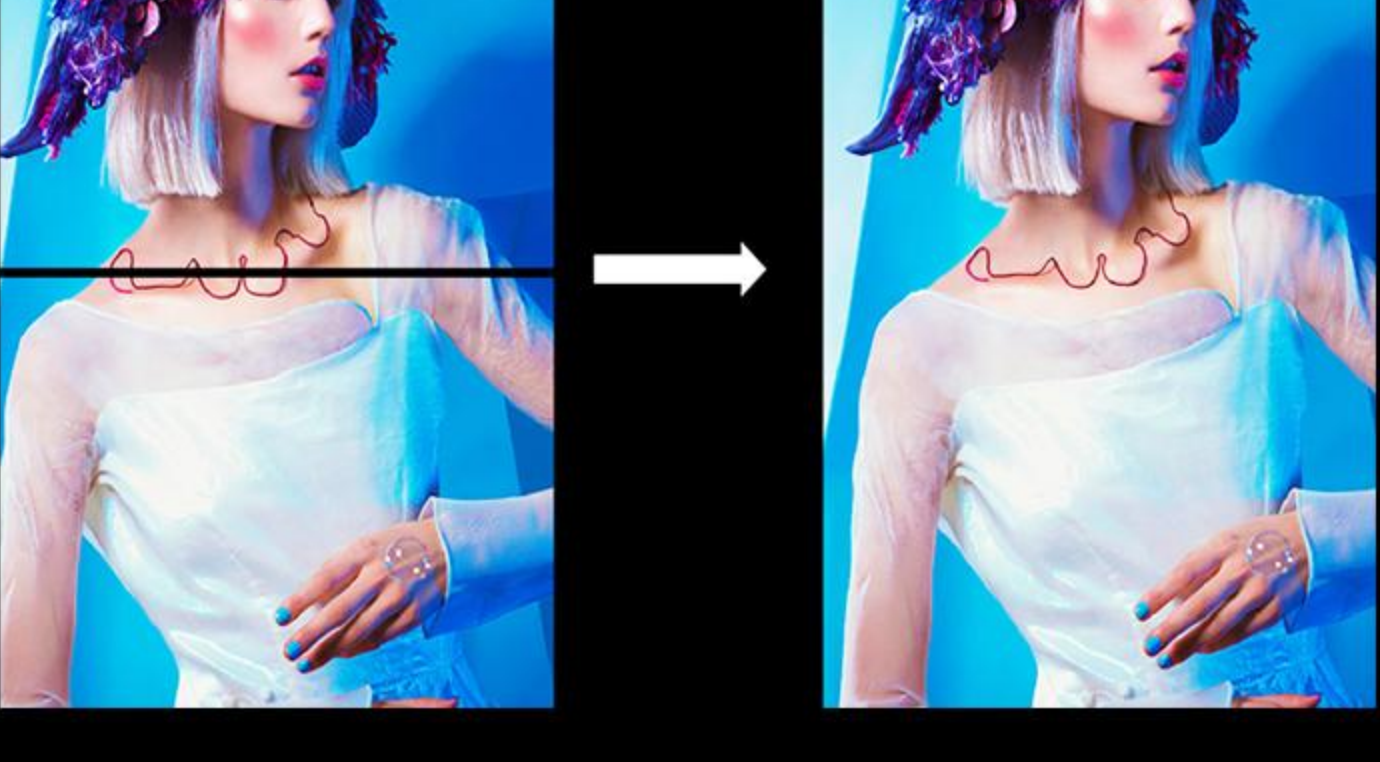
Front maintenance design: Modules, power supply, received card can be maintained from the front without rear space.

Front install design: support direct wall mounted with simple steel bars



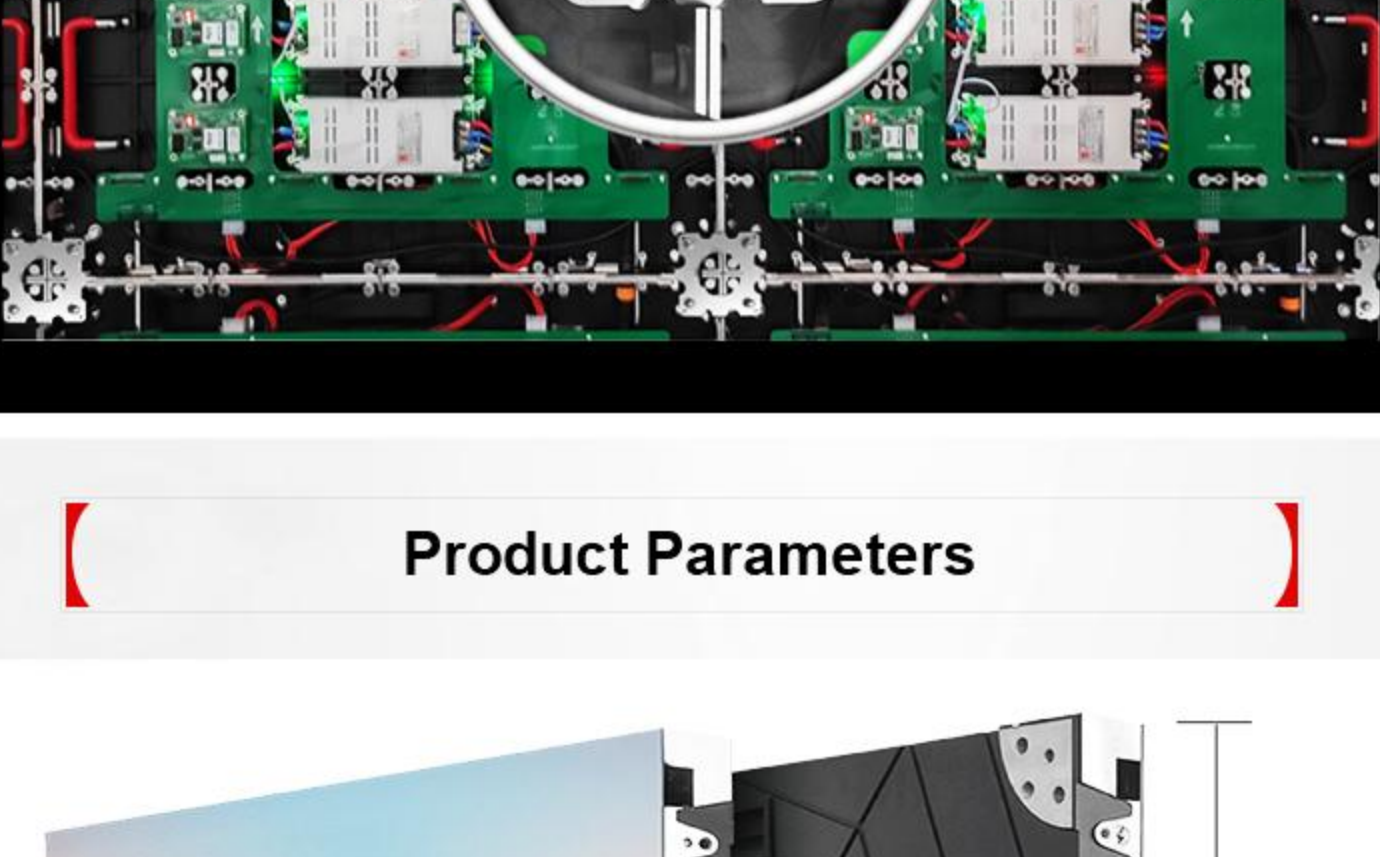
SUPPORTS DUAL BACKUP OF NETWORK CABLES

- ▶ Dual backup of input network cables, backup network cables to maintain signal transmission when one network cable fails.



STABILITY AND SECURITY

- ▶ **Dual power dual card backup design** as long as one stops working and the other starts automatically. At the same time, the system will receive errors and display the exact error location.
- ▶ **Highly integrated design and high quality plug-ins** can reduce the occurrence of **80%** problems and greatly improve product stability.



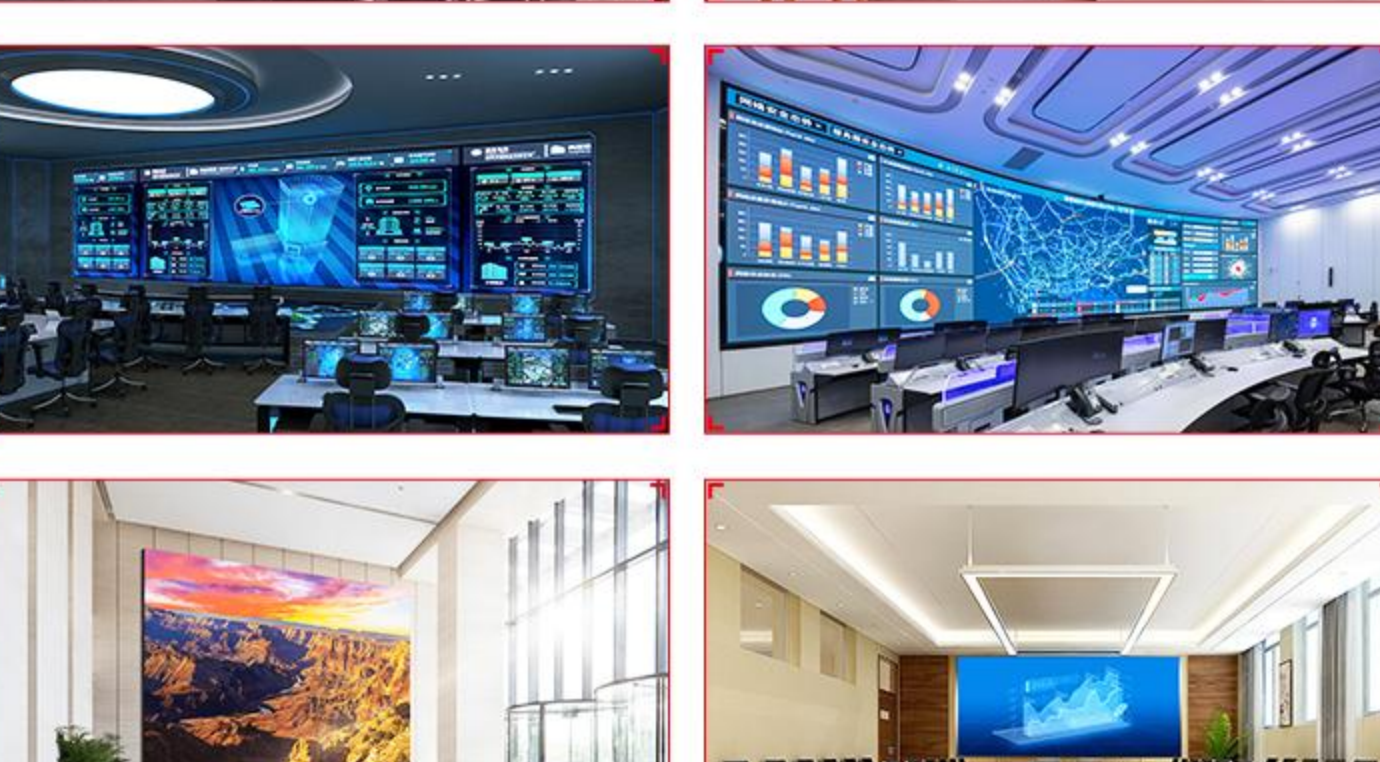
USER FRIENDLY DESIGN

- ▶ A floating connector is used between the module and the box, make the installation becoming simple and easy;
- ▶ Module can be fine-tuned for more flat stitching;
- ▶ Anti-dementia interface to avoid incorrect installation;



PATENTED CONNECTOR, SIMPLE INSTALLATION

Patented design connector is adopted for cabinet installation, simple and easy installation



Product Parameters

Box size: 600*337.5*39mm (27 inches)

Parameter	P0.93Common Cathode	P1.25	P1.56	P1.87
LED Lamp		Flip SMD / COB technology		
Brightness(cd/m²)	COB:500-600	600-800	600-800	SMD:600-800
Refresh rate (Hz)	≥2880Hz		≥3840Hz	
Panel size(mm)	600*337.5*39	600*337.5*39	600*337.5*39	600*337.5*39
Viewing distance(M)		1m-100m		
Box weight (kg)		5.1kg		
Max/Ave (W/m²)		SMD:Max :600W/m², Ave :180W/m² / COB:Max 500W/m², Ave :150W/m²		
IP grade		IP30 / IP54		
Contrast ratio		Contrast ratio:8000:1 / Contrast ratio:10000:1		
Grayscale (bit)		16bit		
Frame frequenc (Hz)		50 / 60Hz		
Viewing angle (Deg)		SMD :140°-160° / COB :170°-170°		
Install/Maintenance way		Maintenance way: Front maintenance; Install way: Front or rear install		
Work environment		Temperature : -20°C ~ +60°C, Humidity 10%RH-95%RH		
Lifespan/MTBF (H)		Lifespan:≥10000, MTBF ≥50000		

Success Cases

Broadcast, TV Studio, Airport, Exhibition, Conference, Military Monitor, Star Hotel, Metro Station, luxury store, 4S car, Festival party, Church, Restaurant, School, Museum, Bank, Club, Supermarket, Commercial Central, Monitor Centre etc

